

Welger Recycling Engineering GmbH

P.O.Box 1965
38289 Wolfenbüttel
Phone +49 (0) 5331-404 0
Fax +49 (0) 5331-404 242
wre@welger.com
www.welger.com

SB 1000 · SB 2000 · SB 3000 Horizontal Baling Presses

Technical Data

WELGER Horizontal Baling Presses	SB 1000	SB 2000	SB 3000
Length (without/with bale chute)	3380/4180 mm	3990/4690 mm	5035/6235 mm
Width	1120 mm	2 100 - 3185 mm	1400 mm
Height	1760 mm	2000 mm	2600 mm
Height of feed table	990 mm	900 mm	1200 mm
Width of feed table	600 mm	800- 1000 mm	800 mm
Weight	1000 kg	1850 kg	3500 kg
Bale length, infinitely adjustable	600 - 1200 mm	600 - 1200 mm	800 - 1500 mm
Bale width	600 mm	500 mm	800 mm
Bale height	375 mm	400 mm	700 mm
Bale weight, depending on baling material	40 to 60 kg	40 to 60 kg	150 to 365 kg
Bale density, depending on baling material	150 - 300 kg/m ³	240 - 380 kg/m ³	250 - 400 kg/m ³
Capacity / throughput	up to 0,75 t/h	up to 2 t/h	up to 3 t/h
Pressing force	4,3 t	7 t	31 t
Specific pressure	20 N/cm ²	35 N/cm ²	55 N/cm ²
Time per working cycle	6,3 s	4,0 s	11,5 s, as pre-selected
Tying material	plastic twine	baling wire, oiled	baling wire, oiled
Running length	250 m/kg	-	-
Diameter of tying material	-	2,2 mm Ø	2,5 and 2,8 mm Ø
in coils of approx.	4,5 kg	40 kg	40 kg
Consumption of tying material per ton of baled material	0,5 kg/t	3 - 4 kg/t	2 - 3 kg/t
Diameter of coil	240 mm	336 mm	336 mm
Height of coil	260 mm	152 mm	152 mm
Three-phase motor/central hydraulic drive	5,5 kW, IP 54	11 kW, IP 54	11 kW, IP 54
Separate drive of tying device	-	-	0,75 kW, IP 54
Fuse, mains	20 A slow	35 A slow	35 A slow

The electrical equipment corresponds to the VDE regulations. When connecting to supply the regulations of the relevant local authorities have to be observed. The power supply has to be secured on the building side as mentioned in the installation regulations of the baling press. Subject to alterations. The details and diagrams provided in this pamphlet are approximate and, apart from the standard scope of supply, may also include special accessories. (●->standard, -> not available, ○>optional)



Horizontal Baling Presses from Welger – Recycling on the Intelligent Way.

The highly automated horizontal baling presses SB 1000, SB 2000 and SB 3000 from Welger can be integrated in nearly every industrial production workflow process. These balers allow the segregated processing of many different materials directly at the place, where they are generated.

With the concepts for waste disposal developed by our engineers they are the most important components of intelligent waste logistics. Our customers can profit from many years of knowledge and experience won in nearly every type of trade and industry. This way comprehensive consultations by our engineers lead to individual system solutions.

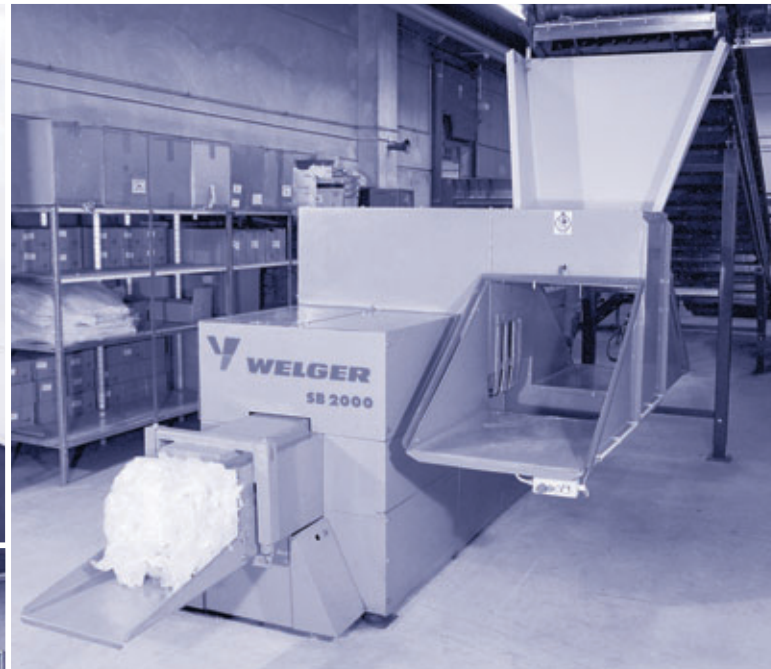
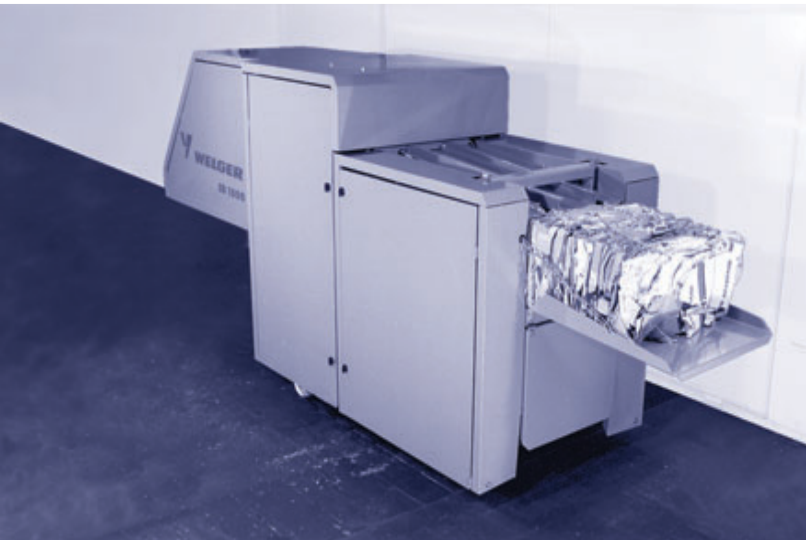
SB 1000 Cardboard „very tiny“.



The Welger baling press SB 1000 is our ideal solution for the efficient compaction of large volumes of cardboard. A well thought out technique, high operation comfort, low cost for tying material and manageable bale sizes guarantee an economic disposal of the processed waste materials.

Advantages at a glance:

- Extremely compact baler, flexible in operation
- Very robust and durable for a long and trouble-free working life
- Easy to operate
- Fully automatic working baling press
- High economic operation because of low cost for tying material, storage, transport and disposal
- Improved hygiene conditions in warehouse and production
- Extremely safe operation

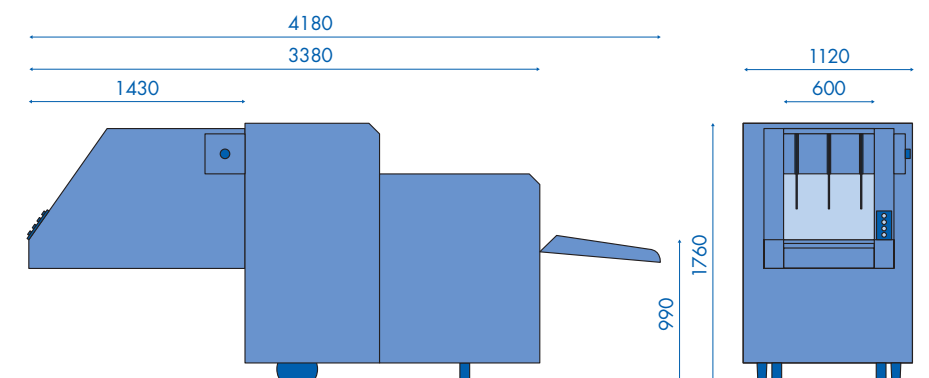
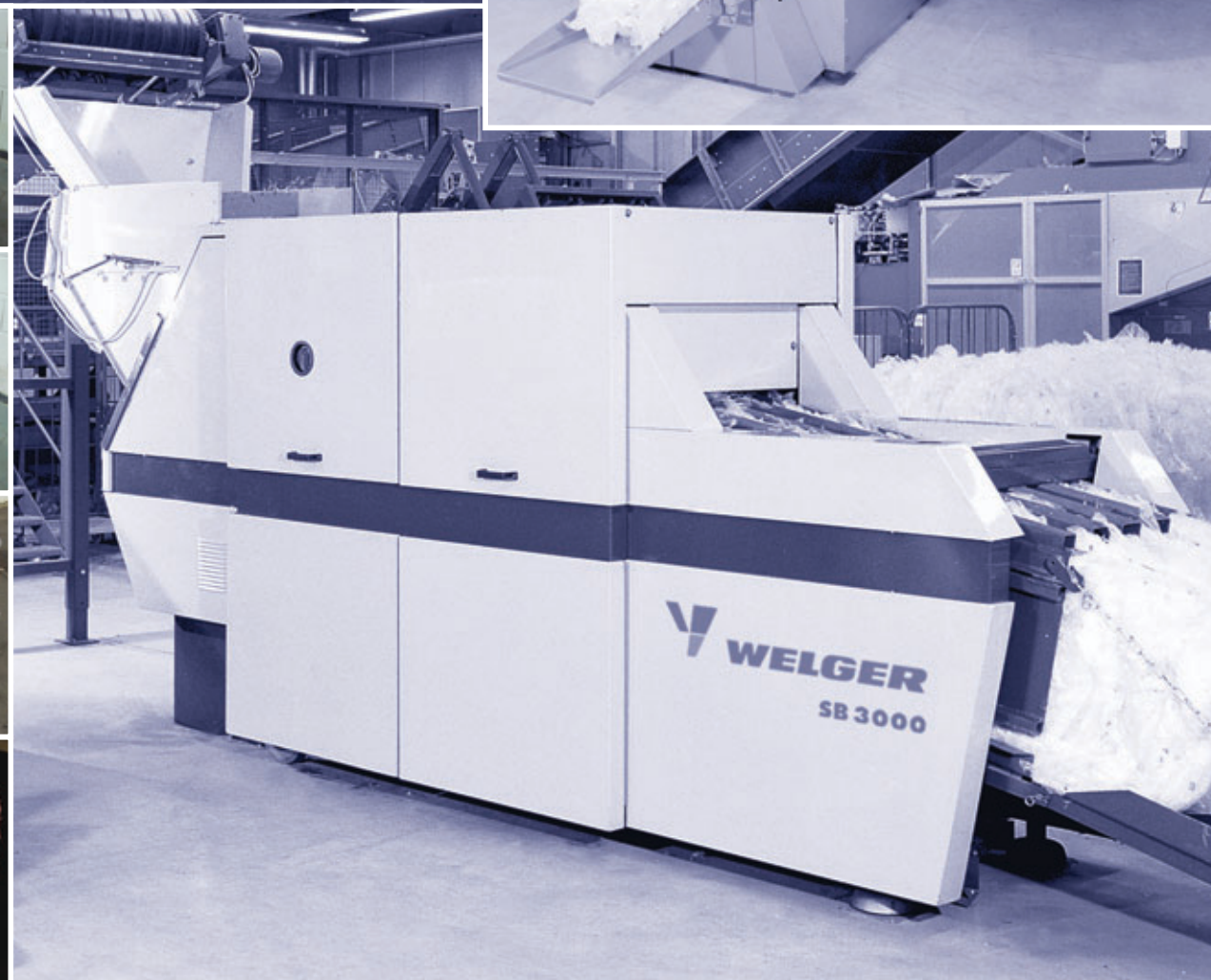


SB 1000

The compact and robust SB 1000 is a fully automated baling press to operate in places with medium quantities of waste.

Explanation of the working method:

Use of the press is extremely simple. You only have to press the ON/OFF switch, and feed the cardboard into the hopper of the press. There it will be automatically taken by the „packer“, and compressed by the ram. After the bale has reached the pre-determined length, it will be tied twice with synthetic twine into manageable bales and then ejected via the bale chute.



The Welger baling press SB 1000 is fitted with a fully automatic tying device, with which compressed material is tied into manageable bales.

These are a perfect size to fit onto Euro pallets.

SB 2000

The modular series.

In many different types of trade and industry waste materials are generated during the process of production, that have to be continuously collected and disposed. With the modular baler series SB 2000, Welger are able to meet these demands. The baler consists of a standard main-frame and is combined with different feeding devices that are optimized for this purpose.

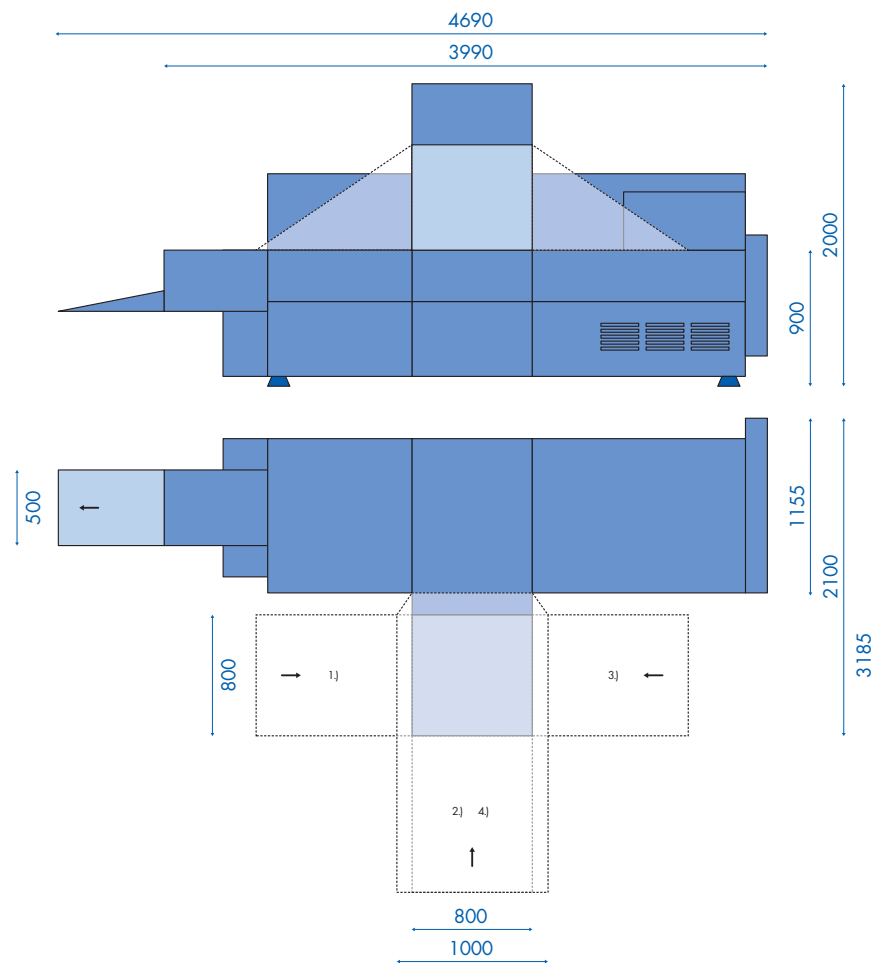


Occurring recycling materials:

- Big-bags
- Plastic film
- Cardboard
- Wrapping straps
- Sheets/strips of paper
- Foam off-cuts
- Fleece materials
- Other special materials

Advantages at a glance:

- Extremely compact baler, flexible in operation because of modular concept
- Very robust and durable for a long and trouble-free working life
- Fully automatic working baling press
- Highly efficient operation due to low cost for tying material, storage, transport and disposal
- Easy to operate
- Improved hygiene conditions in warehouse and production
- Extremely safe operation



For manual feeding there are five types available:

- 1) SB 2011: baling press with manual feeding from the rear
- 2) SB 2012: baling press with manual feeding from the side
- 3) SB 2013: baling press with manual feeding from the front
- 4) SB 2014: baling press with manual feeding from the side (extra large hopper = 1000 mm)
- 1)+3) SB 2015: baling press with manual feeding from front and rear (dual mode)

Based on the standard model SB 2000 the baling press can be delivered with different devices for automatic feeding, for example: conveyor belt, air conveyor, lifting and tilting devices etc. and can be easily integrated into production plants.

Explanation of the working method:

The SB 2000 is a baling press that can be fed continuously and it works fully automatically. The waste material is conveyed via a feeding hopper that is placed at the side of the baling channel. A „packer“ moves the material into the baling channel. Where the material is compressed by the action of the compression ram and when formed, tied twice fully automatically with wire or plastic twine. The bale length can be set infinitely from 60 to 120 cm.

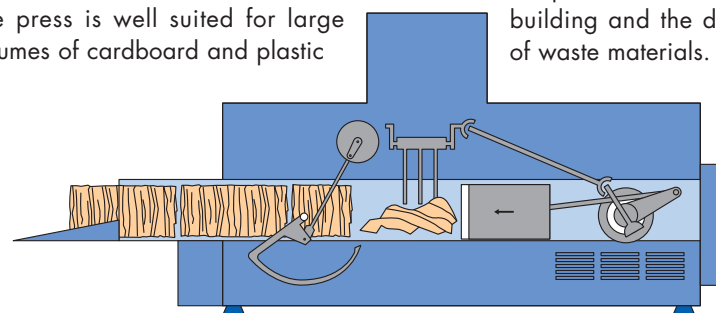
SB 2000

The SB 2000 baling press is mainly used for the compaction of variable amounts of differing materials that are generated as a result of special production processes.

The press is well suited for large volumes of cardboard and plastic

film, big-bags, straps and strips of film coming from production and processing, as well as PET bottles, fleece materials, corrugated board and other special materials.

The press can be used universally, to be adapted to suit the conditions of the building and the different volumes of waste materials.



SB 3000

The most effective power from Welger.



The SB 3000 is a hydraulic baling press with a compact construction, giving high throughput for large volume materials. Forced intake of the materials to be compressed is done through a hydraulically driven packer. Depending on the individual requirements the press can be fed manually or automatically.

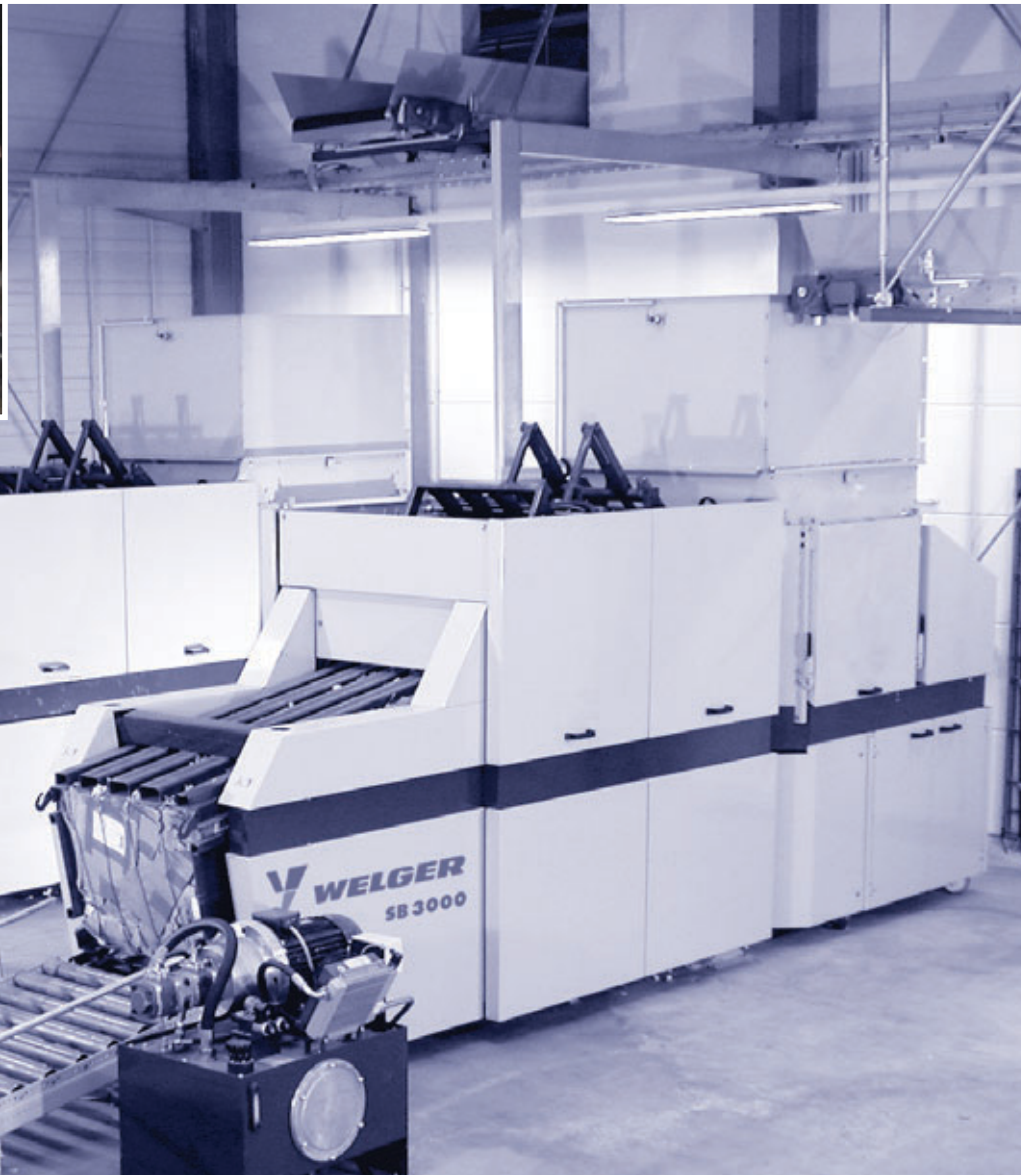
The press can be fitted with different automatic feeding devices. For example: belt conveyor, air conveyor, lifting and tilting devices and can be universally integrated into nearly every production process.

Occurring recycling materials:

- Big-bags
- Plastic film
- Cardboard
- Wrapping straps
- Sheets/strips of paper
- Foam disposals
- Fleece materials
- Other special materials

Advantages at a glance:

- Extremely compact baler, flexible use
- Very robust and durable for a long and trouble-free working life
- Easy to operate
- Fully automatic tying and baling process
- Highly efficient operation due to low cost for working staff, storage, transport and disposal
- Improved hygiene conditions in warehouse and production
- Extremely safe operation



SB 3000

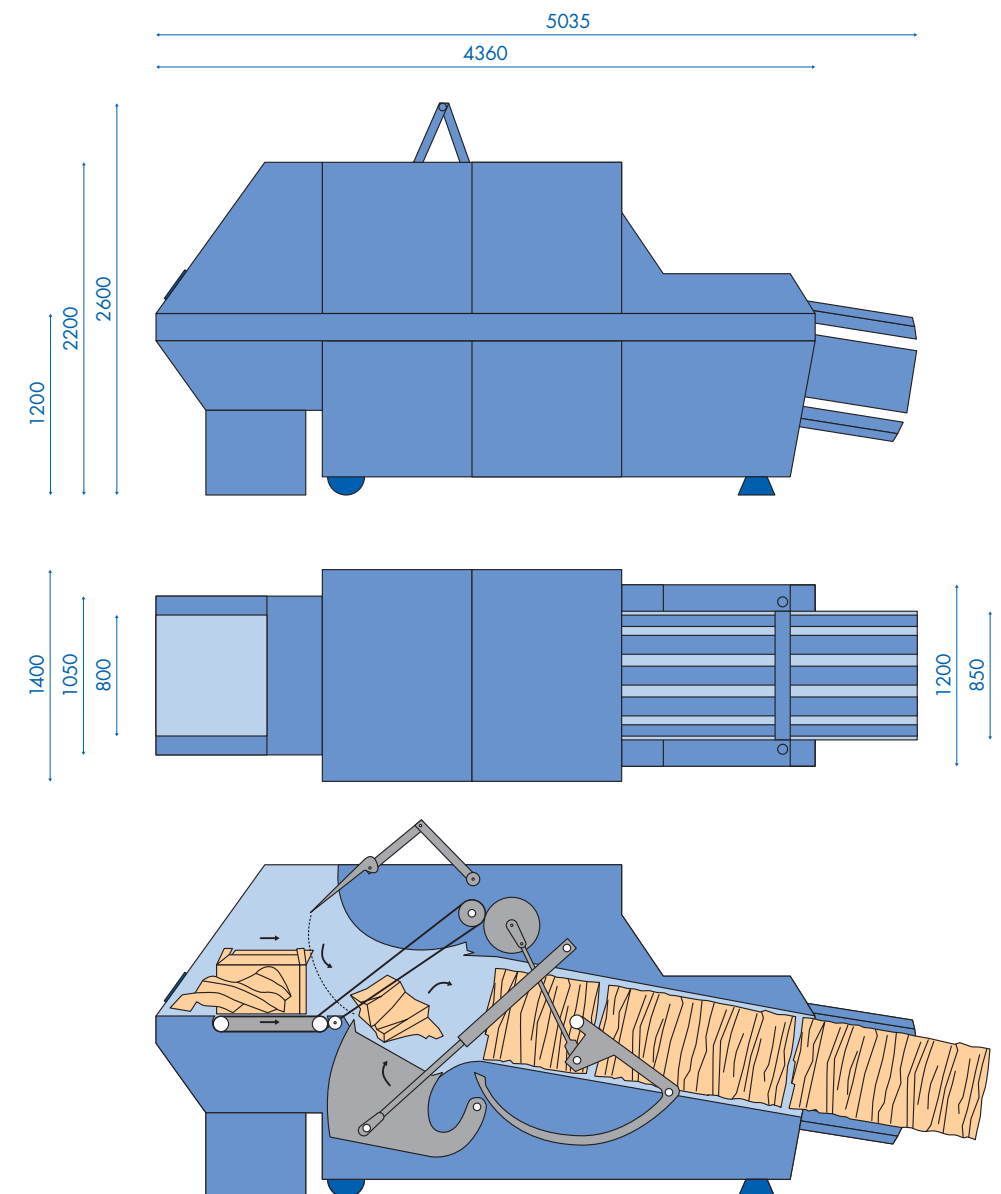
The SB 3000 baling press is well suited by its construction to compact large sized waste materials, as they are generated. For example: big corrugated cardboard boxes in department stores and furniture warehouses.

All components of the press are designed to give a high throughput. Firstly the wide feed hopper, followed by the fully automatic wire tying as well as the powerful hydraulic system all machine parts are synchronised to work together, to reduce expensive working time to a minimum.

The construction principle of the Welger baling press SB 3000 is made to compress large cardboard boxes.

With the forced intake of the material a high throughput is obtained.

The machine produces evenly formed bales that can be easily stacked, ideal for loading, transport and marketing.



Explanation of the working method:

After having carefully segregated the waste, these materials can then be put into the feeding hopper of the press. The hydraulically driven packer automatically moves the materials to the bale chamber into the direction of the compression ram.

This is already the start of pre-compression. After at least five packer strokes, the ram swings upward and moves the baling material into the bale channel. With the addition of more baling material continuing to be fed in, the bale is formed and pushed into four open loops of tying wire and automatically tied.

After the pre-selected bale length (800 - 1500 mm) is obtained, the finished bale is tied with four wires and with more material continuously being fed in, the tied bale is forced out of the baling channel.

