

MC16

Large multi chamber baler

The MC16 multi chamber baler has been designed to serve customers with larger quantities of waste and a demand for sorting waste.

The standard machine is supplied with two chambers, but additional chambers can be added, when sorting several waste types.



1.

■ Effective operation

With a fast cycle time

■ Easy move of press section

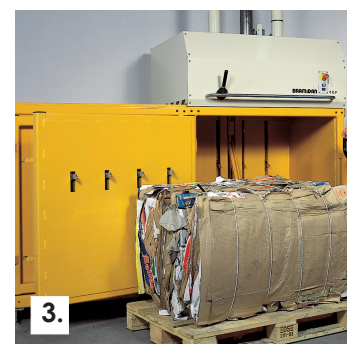
Due to horizontal handle

■ Automatic ejection

Two-hand operation ejects the bale



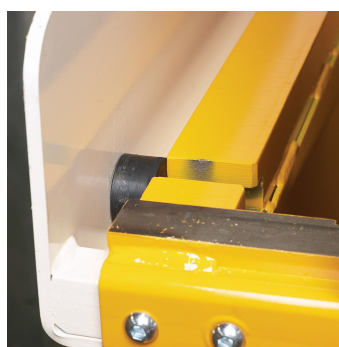
2.



3.



Technical specifications	
Press force (t)	16
Power supply	3x230/400V 50Hz 25/16A
Motor (kW)	4.0
Noise level (dB)	68-72
Cycle time (sec)	26
Dimensions WxDxH (mm)	2540 x 1210 x 2570
Weight (kg)	1655
Filling opening WxH (mm)	1100 x 700
Filling height (mm)	1420
Chamber height (mm)	-
Stroke (mm)	650
Bale size WxDxH (mm)	1100 x 700 x 800
Bale weight cardboard (kg)	160-200
Bale weight plastic (kg)	180-250



Rubber shock absorbers ensure a noiseless move of the press section.



The horizontal handle gives an ergonomic working posture.